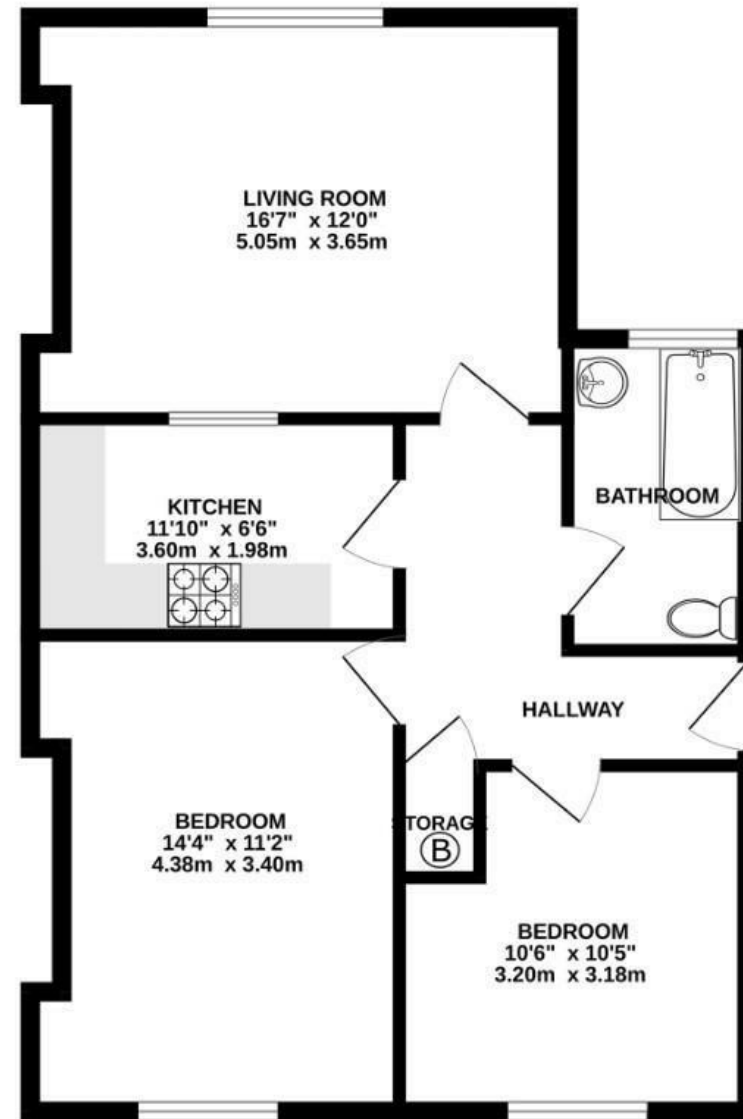


Sydenham Road

COTHAM

APPROXIMATE FLOOR AREA
60.2 SQM / 648 SQFT



Illustrations are for reference purposes only, measurements are approximate, not to scale.

Boardwalk

Sydenham Road

COTHAM, BRISTOL



£365,000



2 Bedrooms



BS6 5SJ



1 Bathrooms

"I have loved living in this flat, it is such a sunny and comfortable home with cute features full of character. We love sitting in the window seat looking out the sash window at amazing views over Bristol. The flat feels safe and quiet with friendly neighbours and a shared garden for a sunny BBQ! The flat is super close to the University and Hospital and to great shops, restaurants and bars on Gloucester Road. The Bannatyne health club and a handful of our favourite pubs are just over the road."

